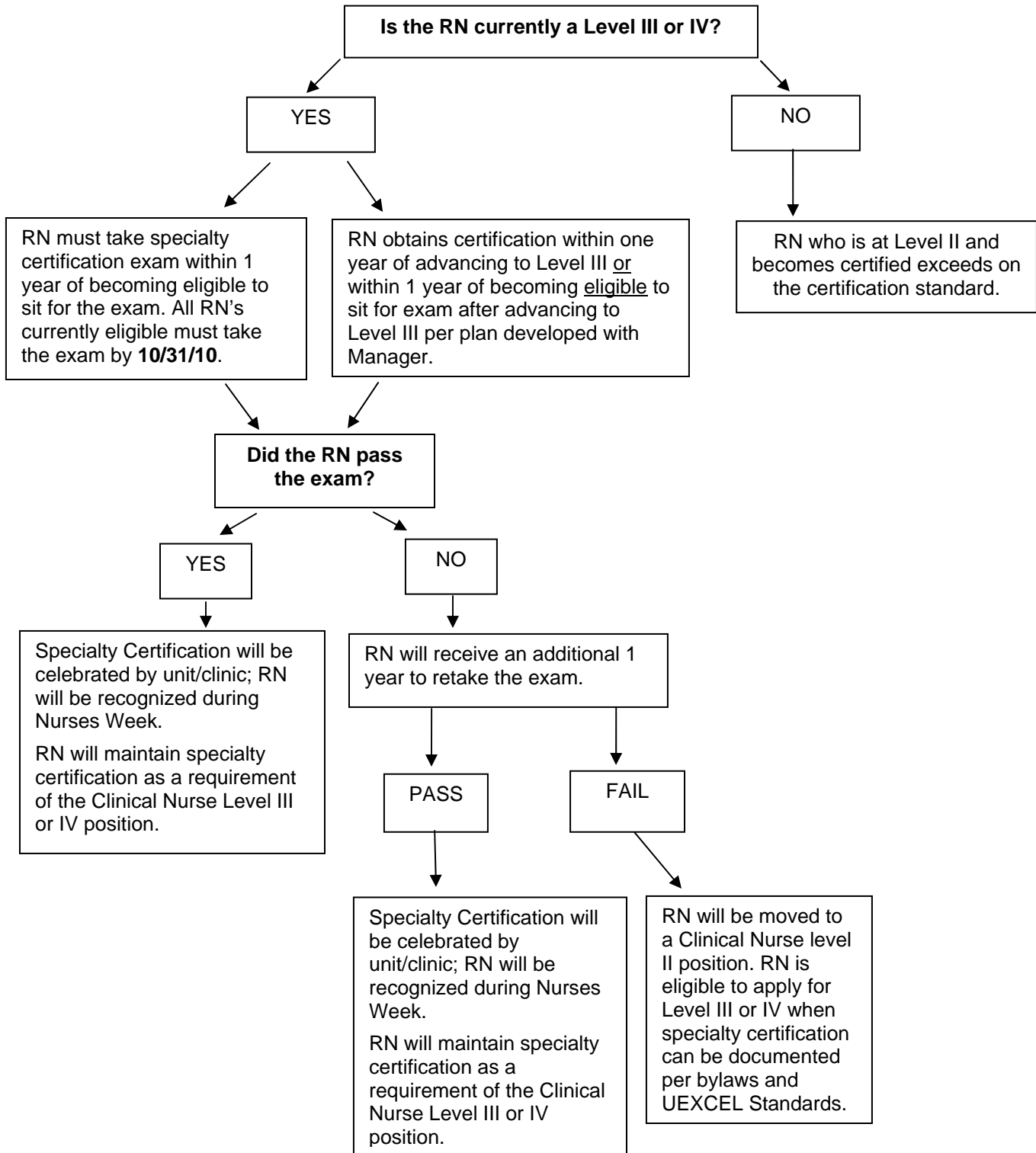


**University of Colorado Hospital
UEXCEL Professional Profile Standard: Certification**

RN Certification Algorithm



If at anytime a Level III or IV RN is unable to take the specialty certification exam, per the algorithm, the RN will be re-classified to Level II. The time table and documentation of the plan for RN certification is to be developed with manager and RN mutual participation. The goal is for successful achievement of specialty certification!