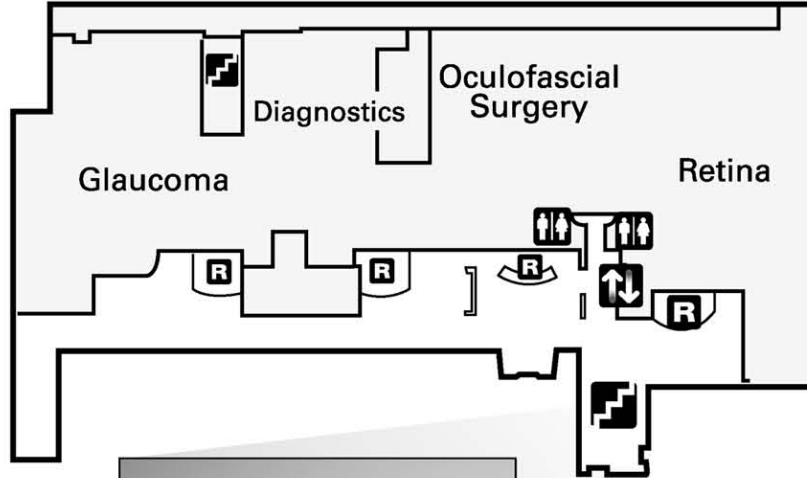
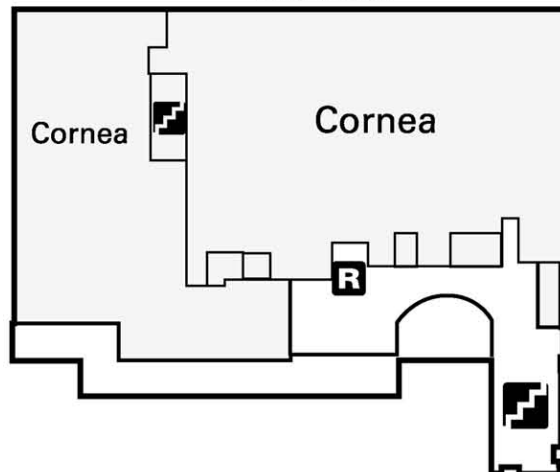


1st Floor



2nd Floor



The Rocky Mountain Lions Eye Institute is open Monday through Friday 7:00 a.m. to 6:00 p.m. Complimentary valet parking is available at the entrance to the building.

Automatic Teller Machines

There are Automatic Teller Machines (ATMs) on the first floor of the Anschutz Outpatient Pavilion and the Inpatient Pavilion.

Cashier (OP1020)

If you would like to make a payment on either your University of Colorado Hospital bill or your University Physicians, Inc. bill, you are welcome to do so in the Cashier's office located on the first floor of the Anschutz Outpatient Pavilion.

Conference Rooms

Conference rooms for health care related meetings are located on the second floor of the Anschutz Outpatient Pavilion. These rooms are accessible to individuals with disabilities.

Dining Services

Garden View Café - Hot meals, beverages, sandwiches and a salad bar are available in the Garden View Café on the first floor of the Anschutz Inpatient Pavilion.

Daily hours:

7 a.m. – 10 a.m. for hot breakfast

10 a.m. – 11 a.m. for continental breakfast

11 a.m. – 2 p.m. for lunch

2 p.m. – 8 p.m. and 11 p.m. – 2 a.m. for dinner

Courtyard Café - Hot meals, beverages, sandwiches and a salad bar are available in the Courtyard Café on the first floor of the Anschutz Outpatient Pavilion.
Monday – Friday, 7 a.m. – 2 p.m.

Leprino Building Plaza - A variety of eateries are located on E. 17th Avenue just north of the Anschutz Inpatient Pavilion by the parking structure.

- Salad Creations
- Jimmy John's Gourmet Sandwiches
- Subway and Marble Slab Creamery
- Pudge Brothers Pizza

Lobby Latte

Located on the first floor of the Anschutz Outpatient Pavilion, the Lobby Latte serves hot drinks and pastries.

Monday – Friday, 6:30 a.m. – 2:00 p.m.

Financial Counseling (OP1020)

Financial Counseling is located on the first floor of the Anschutz Outpatient Pavilion.

Gift Shops

Gift shops selling assorted sundries, flowers and small gifts are located on the first floors of the Anschutz Outpatient Pavilion and the Anschutz Inpatient Pavilion. The shops are operated by hospital volunteers with all proceeds benefiting charitable programs within the hospital. **Monday – Friday, 9 a.m. – 4 p.m.**

Patient Resource Center (CRC)

Located directly off the main lobby of the Anschutz Outpatient Pavilion, this staffed, full-service library offers up-to-date health information through books, magazines, medical journals and computers that can access the Internet.

Monday – Friday, 8 a.m. – 4 p.m. depending on staff availability (holidays excluded)

Pharmacies

For the convenience of our patients, pharmacies are located on the first floors of the Anschutz Outpatient Pavilion and the Anschutz Inpatient Pavilion.

Monday – Friday, 8:30 a.m. – 6 p.m.

Restrooms

Restrooms are located on each floor next to the elevator banks. All are accessible to people with disabilities.

Transport

Our main entrance greeters can provide you with a wheelchair escort. Check in with the information desk upon arrival.